

State of Wyoming Corner Record

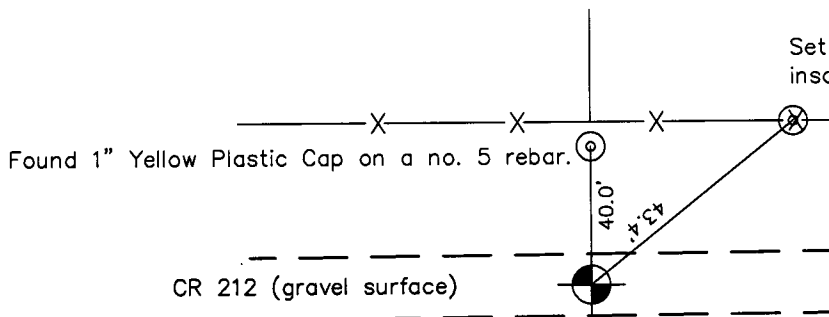
(In compliance with the *CORNER PERPETUATION AND FILING ACT*, Wyoming Statutes, 1997 Section 33-29-140 et. seq., and the Rules and Regulations of the Board of Professional Engineers and Professional Land Surveyors)

Reverse side of this form may be used if more space is needed.

Record of original survey and citation of source of historical information (if corner is lost or obliterated). Description of corner monumentation evidence found and/or monument and accessories established to perpetuate the location of this corner. Sketch of relative location of monument, accessories, and reference points with course and distance to adjacent corner(s) (if determined in this survey). Method and rationale for reestablishment of lost or obliterated corner.

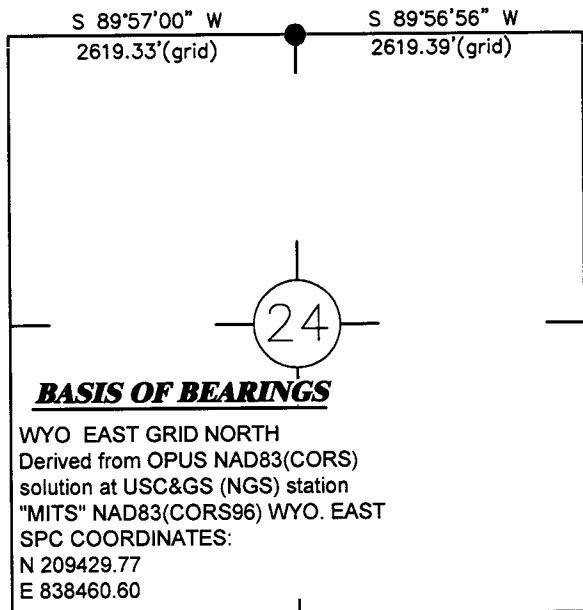
U.S.G.L.O. 1871 Record: Set a granite boulder 15x8x5 for quarter section corner.

Found 2" Aluminum Cap on a no. 5 rebar set 0.6' below gravel road surface and inscribed as shown below.



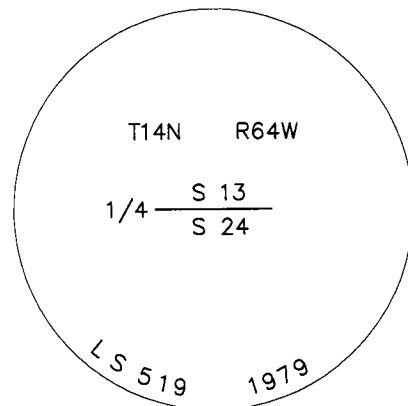
Set mag nail w/1-1/2" aluminum wa: inscribed "DRG inc - LS 6098" in fen

Monument location



WYO. SPC EAST GRID NORTH

Found 2" Aluminum Cap on a no. 5 rebar set 0.6' below gravel road surface and inscribed as shown below.



Monument Inscription

Date of Field Work: 6/10/11

Office Reference: 18717

Cross Index Plat

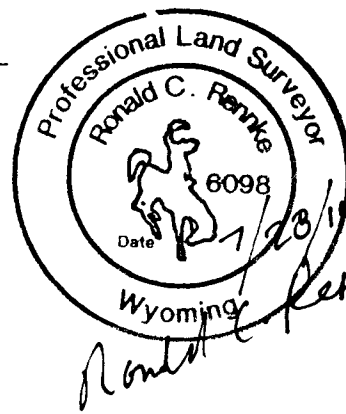
	1	2	3	4	5	6	7	8	9	10	11	12	13	14	15	16	17	18	19	20	21	22	23	24	25		
A																											A
B																											B
C		6			5				4					3					2						1		C
D																											D
E																											E
F																											F
G																											G
H																											H
J																											J
K																											K
L																											L
M																											M
N																											N
O																											O
P																											P
Q																											Q
R																											R
S																											S
T																											T
U																											U
V																											V
W																											W
X																											X
Y																											Y
Z																											Z

Firm/Agency, Address

RONALD C. RENNKE
D. R. GRIFFIN & ASSOCIATES
1414 ELK STREET
ROCK SPRINGS, WYOMING 82901
 Telephone Number: (307) 362-5028

This corner record was prepared by me or under my direction and supervision.

SEAL & SIGNATURE



RECORDED 8/09/2011 AT 10:17 AM REC# 573792 BK# 2231 PG# 476
 DEBRA K. LATHROP, CLERK OF LARAMIE COUNTY, WY PAGE 1 OF 1

Corner Name North 1/4 Corner Section 24, T 14 N, R 64 W, 6th P.M.

Cross-Index No.: N-23

County: Laramie, Wyoming

SBPPEPLS/PLSW: March 1994; PLSW January 1998